

# TRIASMOKE FIX GLASS



## DESCRIPTION

TRIASMOKE FIX GLASS is a static glass smoke curtain that in case of fire limits and controls the movement of smoke with classification of DH 30.

The smoke curtain delimits the space of the building according to the areas that have been specified to prevent the smoke spreading into other areas.

TRIASMOKE fix glass is a system appropriated to public areas where the esthetic criteria is demanded.

Tested and approved according to the European Standard UNE EN 12101-1 and with CE Marking.

## CLASSIFICATION

DH 30

# triasmoke fix glass



## GLASS CHARACTERISTICS

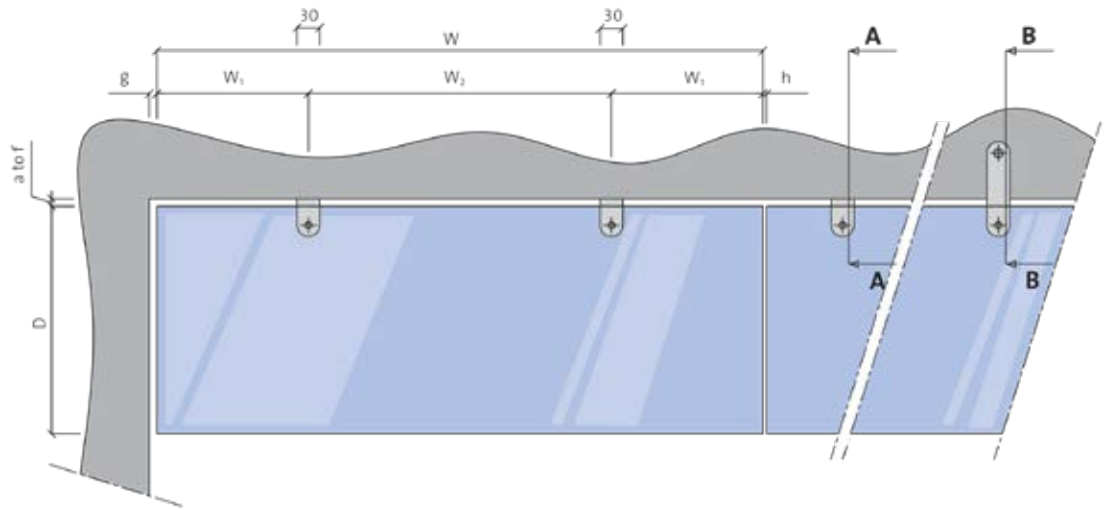
Thickness: 6 mm.  
Width and height tolerance:  $\pm 0.2$  mm.  
Impact resistance (EN 12600): 1(C)1 Classification.  
Specific weight: 15 kg/m<sup>2</sup>.  
Light transmission: 89%.

## OPTIONAL EXTRAS

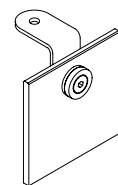
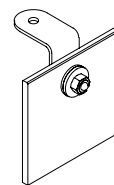
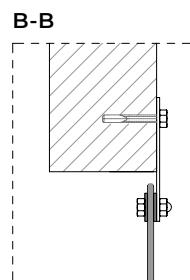
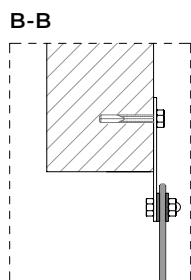
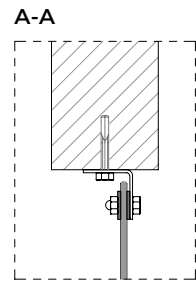
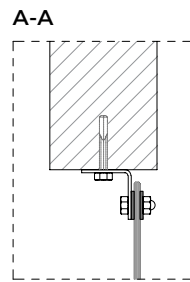
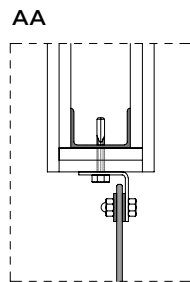
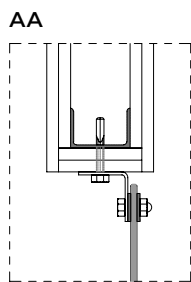
Special shape cutting.  
Stainless steel fixings.

*Note: other requirements and customized solutions on demand.*

**FIXING SYSTEM**

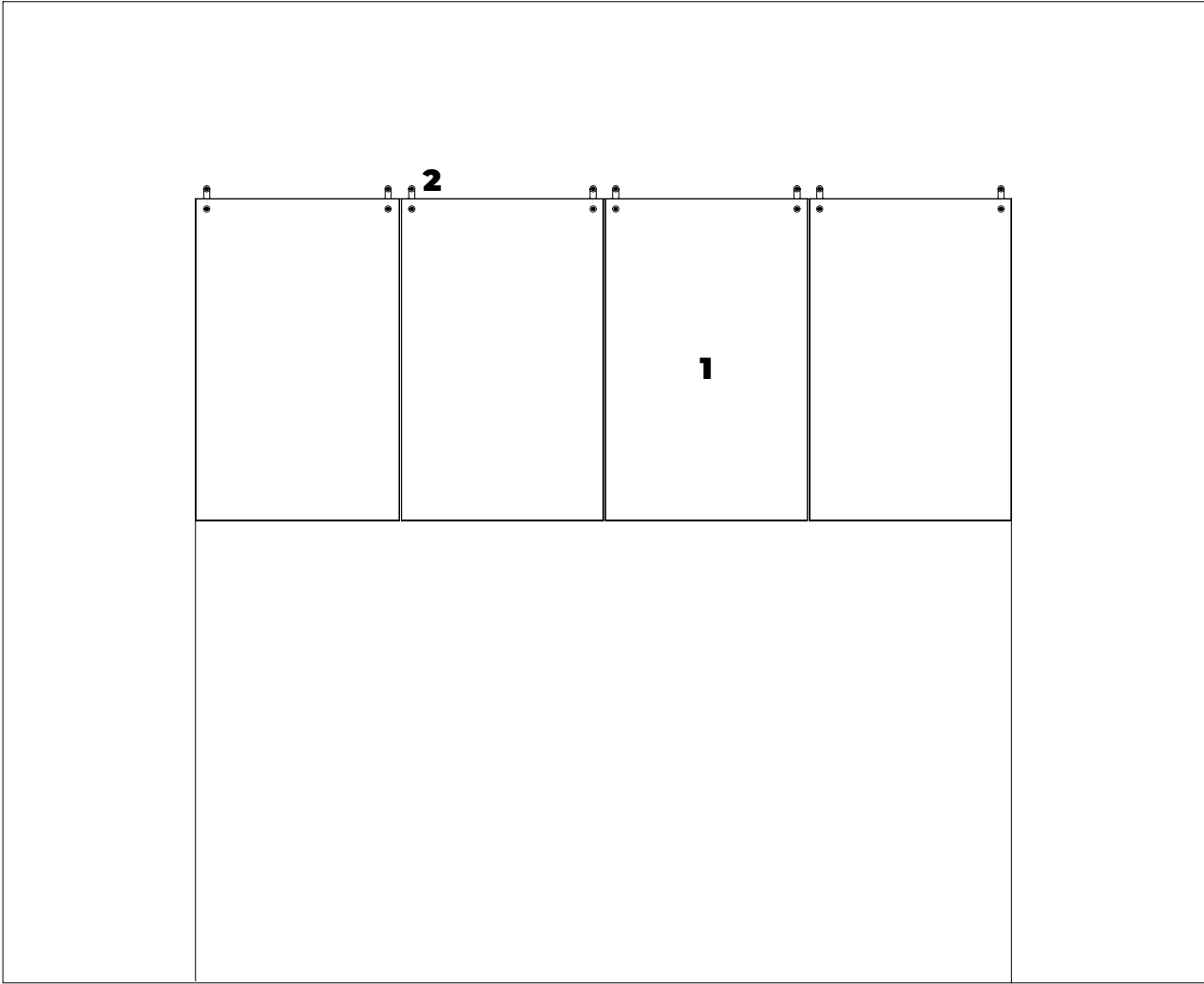


FORMAT	LANDSCAPE	PORTRAIT
W	≤ 2000 mm	≤ 1000 mm
D	≤ 1100 mm	≤ 1600 mm
W1	≥ 100 mm ≤ 350 mm	≥ 100 mm ≤ 250 mm
W2	≤ 1300 mm	≤ 500 mm
a-f	10 mm	10 mm
g	20 mm	20 mm
h	5 mm	5 mm



**FIXING SYSTEM  
STANDARD**

**FIXING SYSTEM  
DESIGN**



**FRONT VIEW**

- 1.** Glass curtain 6 mm
- 2.** Stainless steel fixings or galvanized steel